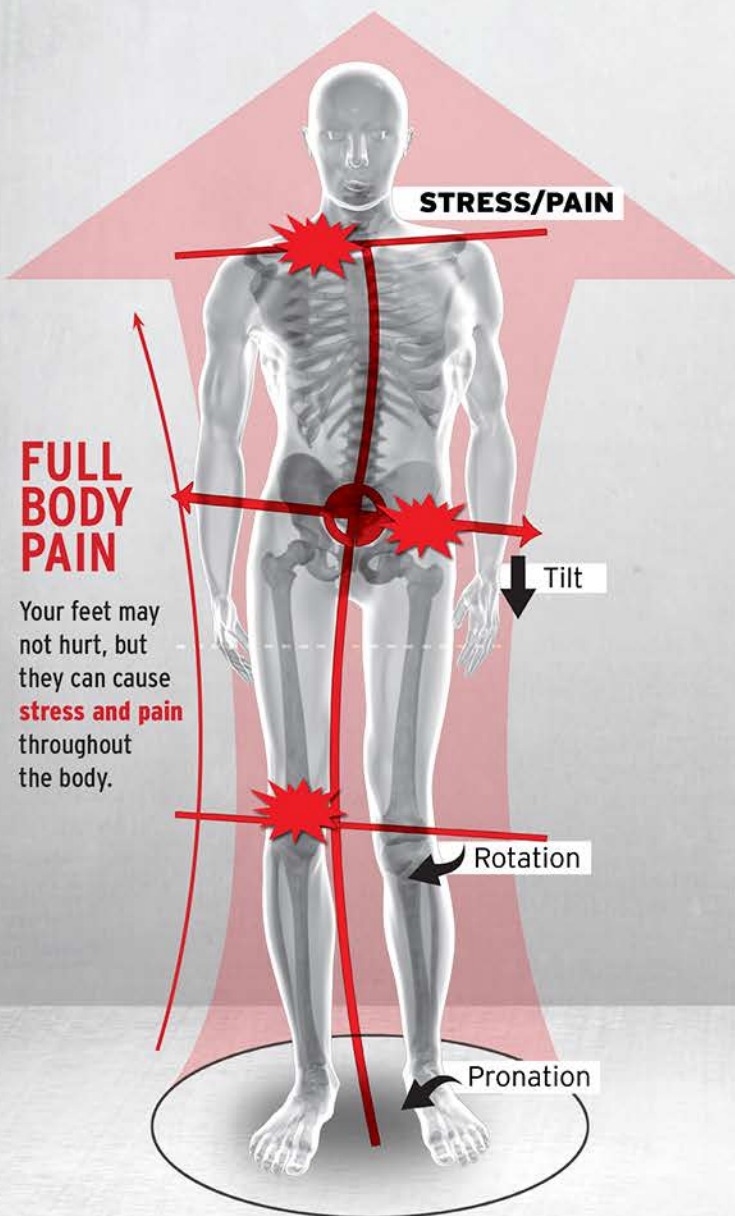


RELIEVE your PAIN

ASK YOUR DOCTOR HOW FOOT LEVELERS CAN HELP

BEFORE
Unsupported



AFTER
**Supported with
Stabilizing Orthotics**

PAIN RELIEF

Restoring a balanced foundation for the spine relieves the pain caused by poor body mechanics.

BALANCE

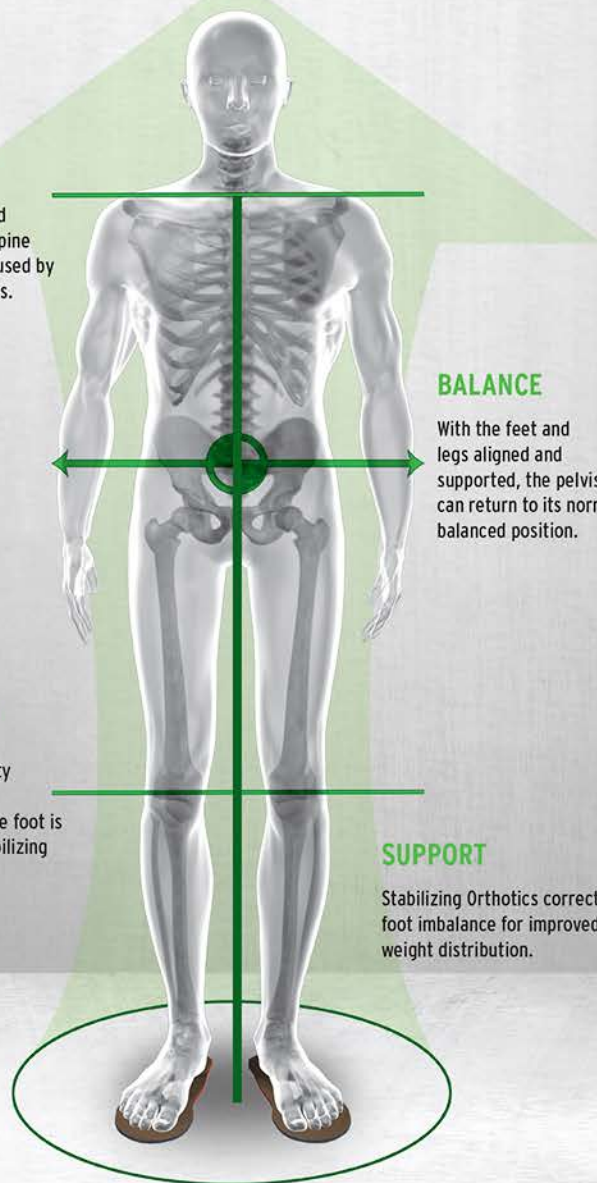
With the feet and legs aligned and supported, the pelvis can return to its normal balanced position.

ALIGNMENT

The lower extremity returns to proper alignment when the foot is balanced with Stabilizing Orthotic support.

SUPPORT

Stabilizing Orthotics correct foot imbalance for improved weight distribution.



Supporting Every Body